

SAFe vs Agile: Choosing the Right Path

Welcome to our exploration of how SAFe and Agile methodologies compare. This presentation will help project managers understand key differences and make informed implementation decisions.

 **by Kimberly Wiethoff**



Project Management Evolution



Software Development Evolution



Waterfall

Forobw

fiocoonertone/veloatiom
innocopiina tncoedgirot
edicesalcis orachitascloine
edctoolerte taligndd.

Agile

Eptodhv

forneceointeaceteelion
intocoeehna ttncedkigrot
cobresine cfeetob/esrfoue
aictocoonote erlicpnio.

Scaled A

Frocedd Agile

forsteacarrifareeteeoon
intococsinnet tnneedkigrot
eobresine cfeetob/esrfoue
eiotocoonote bafajpnio.



Scale of Implementation

Agile Project Management

Designed for single teams with 5-9 members. Ideal for startups and isolated initiatives.

Teams manage their own backlog and ceremonies. Focus on team autonomy and rapid delivery.

SAFe

Built for large enterprises with multiple coordinated teams. Introduces Agile Release Trains.

Coordinates work across dozens or hundreds of practitioners. Aligns teams toward shared goals.

Framework Structure

Agile Approach

Flexible implementation based on Agile Manifesto principles. Teams customize workflows to suit their needs.

Lightweight with minimal overhead. Focuses on delivering value quickly with few constraints.

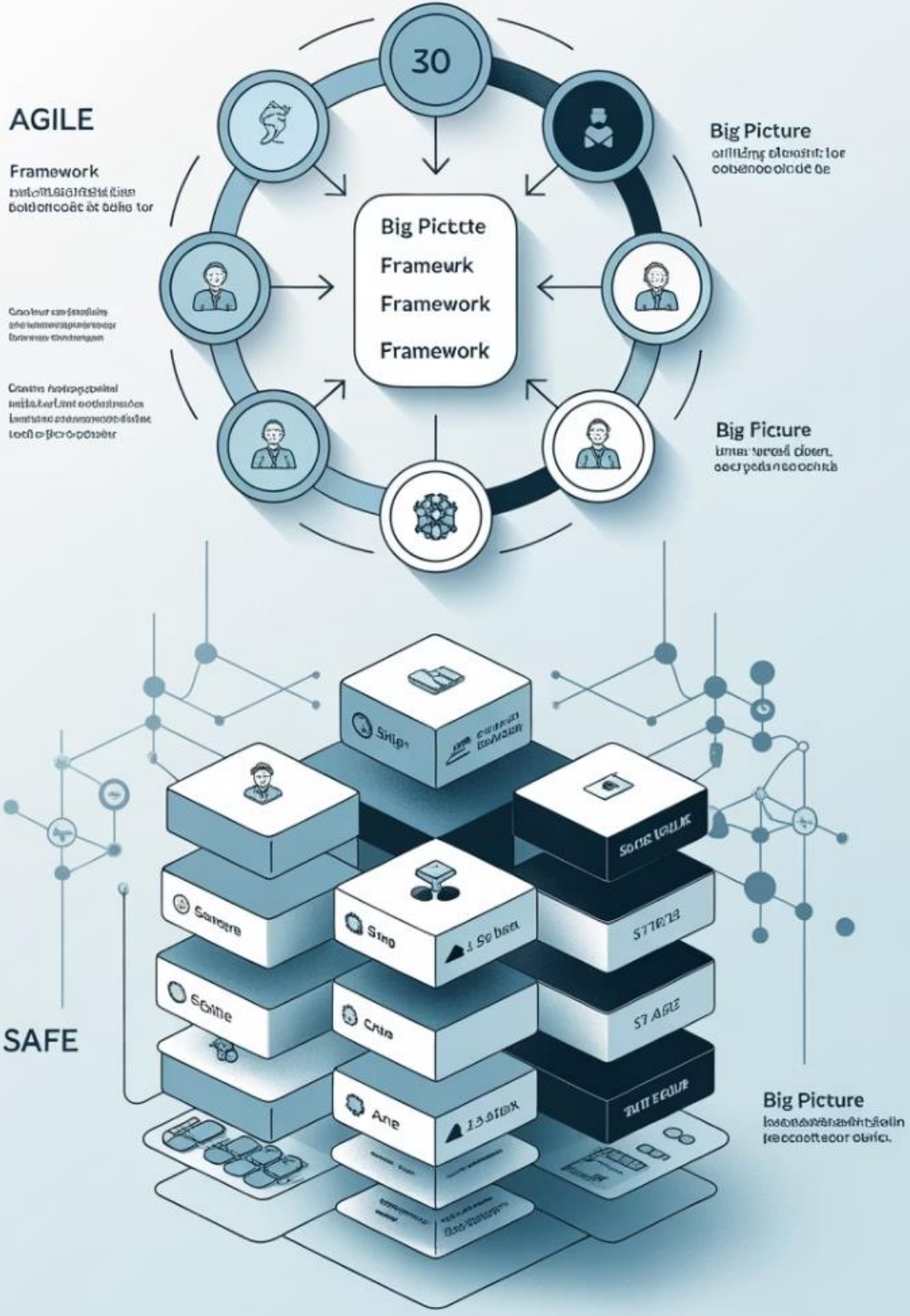
Key Distinction

Agile is team-centric; SAFe is organization-centric. SAFe standardizes practices across the enterprise.

SAFe Structure

Prescriptive framework with defined patterns. Includes specific events, roles, and artifacts.

Structured blueprint for enterprise-wide implementation. Scales from team to portfolio level.



Roles & Responsibilities

Agile Roles

Scrum Master, Product Owner, Development Team. Simple structure with clear boundaries.

Governance

SAFe adds formal governance structures. Lean Portfolio Management connects strategy to execution.



SAFe Roles

Adds Release Train Engineer, System Architect, Business Owners. More specialized positions.

Organizational Impact

SAFe distributes leadership across multiple levels. Creates alignment from team to portfolio.

Planning Cadence



Daily Stand-ups

Both use daily sync meetings



Sprint Planning

2-week planning cycles in Agile

01
10

Program Increments

8-12 week planning in SAFe

Agile teams plan independently in short sprints. SAFe introduces Program Increments with synchronized multi-team planning events.

Governance & Strategy



Strategic Themes

Business objectives that guide portfolio decisions and investments.



Portfolio Kanban

Visualizes and limits work in progress across the enterprise.



Lean Budgeting

Funds value streams rather than projects. Enables rapid pivoting.



Metrics & Reporting

Enterprise-wide visibility into program performance and outcomes.



Methodology Comparison



Framework Comparison

Criteria	Agile PM	SAFe
Team Size	Small teams (5-9)	Large programs/enterprises
Structure	Lightweight, flexible	Prescriptive, layered
Roles	Scrum Master, PO, Team	RTE, Business Owner, Architects
Planning	2-week sprints	8-12 week Program Increments
Governance	Minimal, team-led	Lean governance, strategic alignment



When to Choose Agile PM



Small Organizations

Startups and small businesses with single-product focus. Limited organizational complexity.



Need for Speed

Projects requiring rapid delivery and frequent pivots. Low bureaucracy environments.



Autonomous Teams

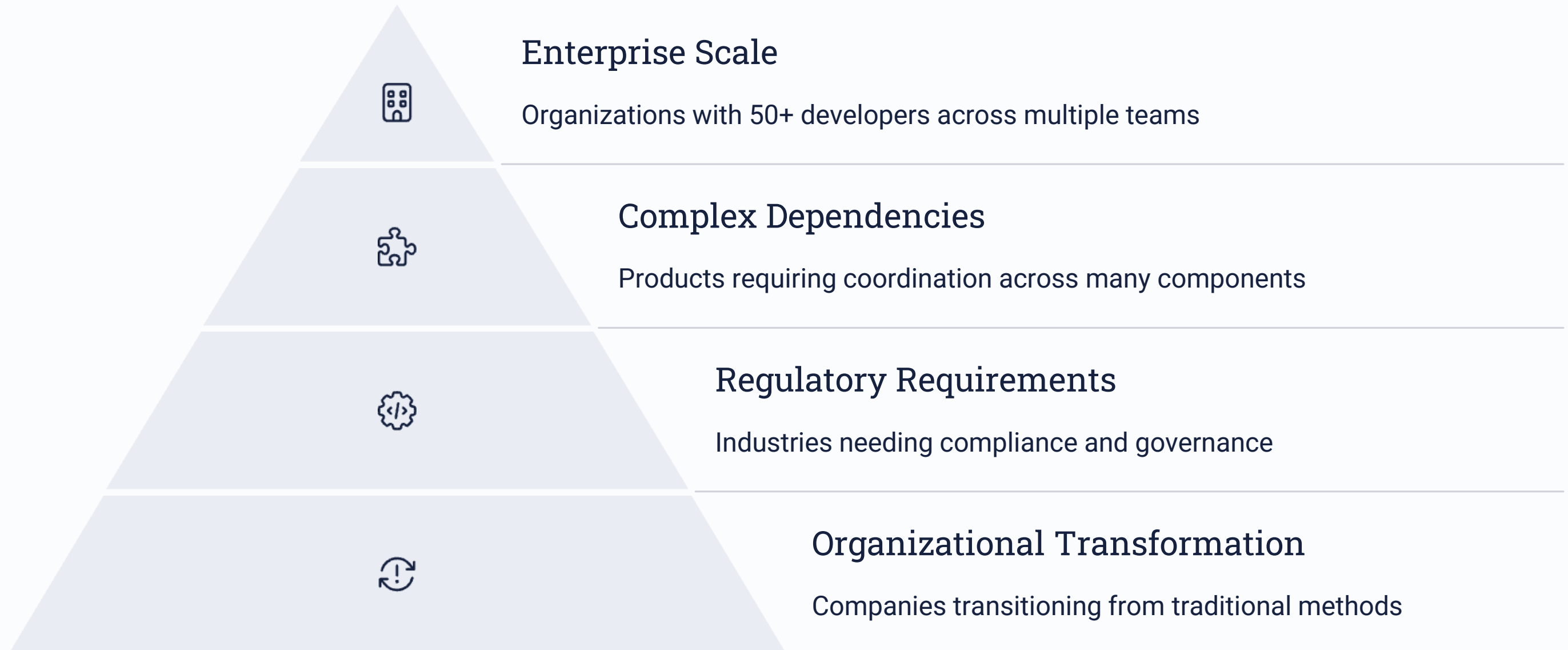
Self-organizing teams that can deliver independently. Projects with clear boundaries.



Learning Environments

Organizations new to Agile. Start small before scaling practices.

When to Choose SAFe





Implementation Challenges



Cultural Resistance

Both frameworks require mindset shifts. SAFe faces more resistance due to its scope.



Over-Engineering

SAFe can become bureaucratic if implemented rigidly. Agile may lack structure at scale.



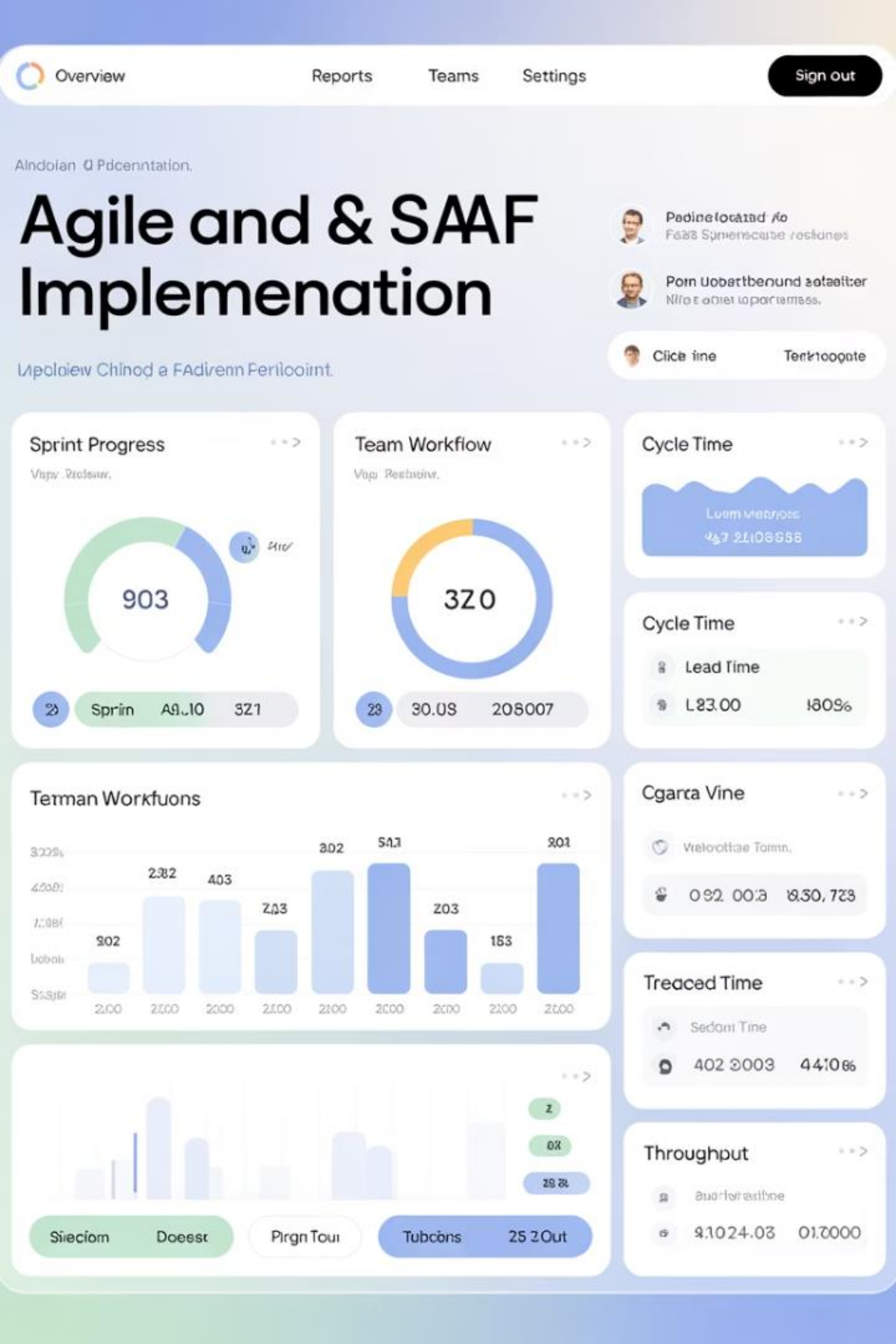
Training Investment

SAFe requires significant training across multiple roles. Agile needs less upfront education.



Implementation Cost

SAFe transformations typically cost more and take longer. Agile can start immediately.



Success Metrics

30%

Productivity Gain

Average improvement after
successful Agile implementation

50%

Time-to-Market

Typical reduction in delivery time
with SAFe

35%

Quality Improvement

Defect reduction in mature
Agile/SAFe organizations

25%

Employee Engagement

Average increase in team
satisfaction scores

Organizational Transformation



Next Steps on Your Journey

Assess Your Context

Evaluate your organization's size, complexity, and culture. Determine if you need scale or agility.

Start With Fundamentals

Begin with Agile basics before scaling. Master team-level practices first.

Incremental Implementation

Adopt SAFe elements gradually if scaling is needed. Don't try to transform overnight.

Measure And Adapt

Track metrics that matter to your business. Be prepared to adjust your approach.

Final Thoughts

Both SAFe and Agile project management share a common DNA rooted in the **Agile Manifesto**, but their applications diverge based on **scale, complexity, and organizational needs**. Agile PM is perfect for small, nimble teams looking for speed and autonomy. SAFe is ideal for large organizations seeking alignment, coordination, and governance across dozens of Agile teams.

As a project manager, understanding these differences will empower you to **adapt your leadership style**, choose the right framework for your context, and drive Agile transformation with confidence.

Agile vs. Safe

